



Sabre Tubular Structures

Utility Structures

Telecommunications

Sports Lighting

High Mast Lighting



A Division of Sabre Communications Corporation

Toll Free 866.254.3707

Phone 817.294.7210

Fax 817.294.5064

utilitysales@sabrecom.com

Sabre Tubular Structures

Sabre Tubular Structures is a division of Sabre Communications Corporation designed to provide tubular structures used in power delivery, telecommunications, sports and high mast lighting. Built with a commitment to customer service, Sabre Tubular Structures has the same high standards and values that have made Sabre Communications a successful tower company for more than a quarter of a century.

In keeping with Sabre's customary high standards, the professional staff at Sabre Tubular Structures is comprised of recognized leaders in the steel pole industry. Joined by a team of experienced customer service/product managers, designers and fabricators, the staff at Sabre Tubular Structures can offer you the best in engineering, fabrication, quality control and sales.



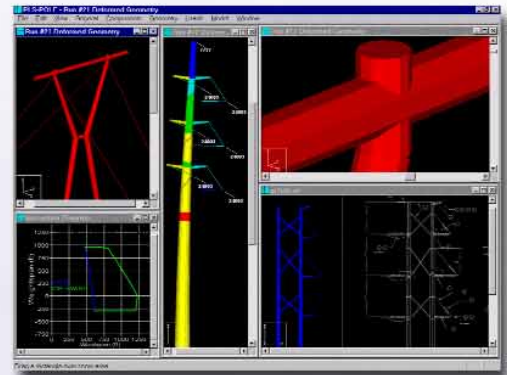
Committed to customer service, Sabre Tubular Structures designs and manufactures steel structures with the customer's needs in mind. We understand that every project is important, and that on-time delivery is essential. We also understand that occasionally changes need to be made during a project. Our in-house systems and detail-oriented team enable Sabre to quickly respond to modifications and maintain your project schedule.

From proposal preparation to final delivery, Sabre assigns a product manager as a single point of contact to address all of your project requirements. The team initiative at Sabre Tubular Structures is to exceed your expectations on every opportunity presented.

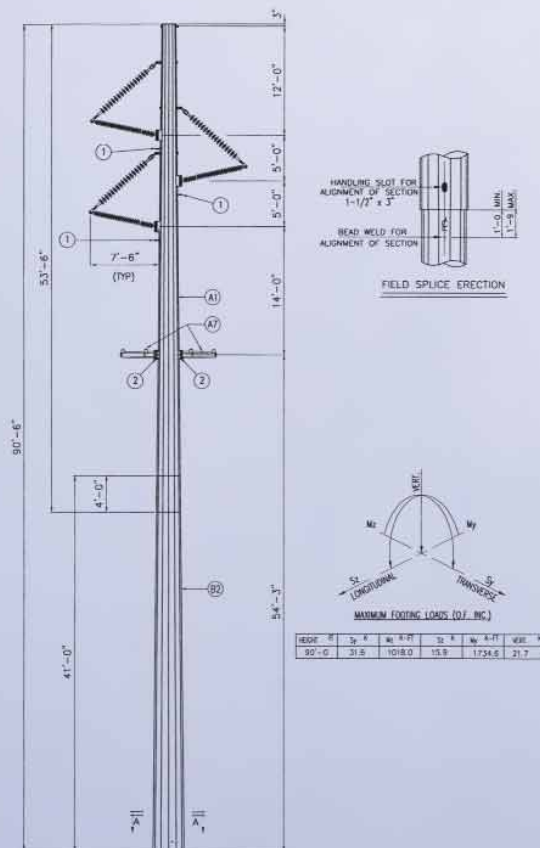
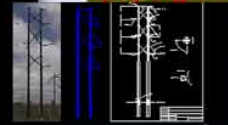
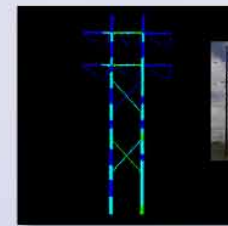
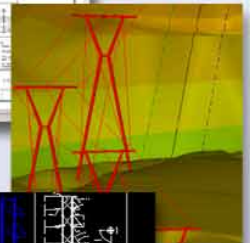
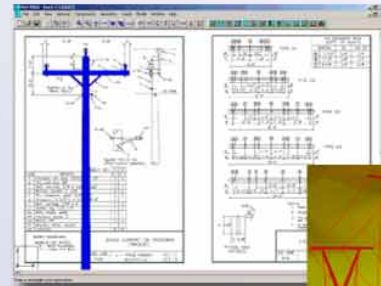


Sabre's Engineering Team

Sabre Tubular Structures utilizes AutoCAD 2000i and the Power Line Systems family of software programs including PLS-Pole, S-Pole and S-Frame to allow for complete collaboration with utility engineers and consultants. Compatibility with customer software allows for direct paperless transfer of pole designs, loading cases and structure geometry. We also utilize a centralized operating system, which allows for seamless and automated integration of information from initial design through the final CNC shop-cutting programs. This program assures the most cost-effective optimizing of pole design significantly reducing manual entry errors and cycle time.



POWER LINE[®]
SYSTEMS · INC ·



Sabre's in-house team of engineers prepare complete calculations packages for each structure at time of bid, including pole shaft, arms and connection design outputs. Anchor bolt cage drawings will be provided when required. In keeping with Sabre's commitment to customer service, complete engineering design packages and detail drawings can be provided in either electronic or hard-copy format, depending on each customer's specific needs.

Fort Worth Facility

Sabre Tubular Structures manufacturing facility is located in Fort Worth, Texas. With over 150,000 square feet of production space situated on 46 acres, this facility has a manufacturing capacity of 25,000 tons of steel structures annually.

Computer controlled equipment, including an Anglematic and two laser-guided submerged arc longitudinal seam welders, complement the

CNC 2200 ton press brake system and 120 foot long burning table equipped with dual plasma and dual oxy fuel torches.

Our in-house capabilities include an arm fabrication shop with a dedicated seam welder, two arm radius-bending machines and welding stations. With all arms, attachments and hardware manufactured at Sabre, you can be assured of Sabre's exceptional quality control for your entire order.

Committed to setting the standard in providing quality products, Sabre's Quality Assurance team performs a final inspection on each structure prior to loading and final shipment from our facility. Sabre's stringent quality assurance program, performance record and exceptional customer service is your guarantee of satisfaction.



Sabre Tubular Products

Sabre Tubular Products



Distribution



Transmission



Substation



High Mast Lighting



Sports Lighting

Sabre Tubular Structures Finishes

Sabre Tubular Structures offers a variety of finishes to meet all your coating requirements. Alliances with galvanizers in close proximity to our Fort Worth plant enable us to guarantee exceptional quality control of our product, while reducing transportation costs and delays. In addition to galvanized and weathering steel, Sabre's in-house climate-controlled coating facility can provide you with a color-coated steel pole. Our alliance with Madison Chemicals, makes it possible for Sabre to offer customers an alternative to paint-like coatings. Madison Chemicals' Tufsheen II™ is a polyurethane base that forms a high cross-linked density adherent on steel products, and is available in a wide variety of color finishes. Sabre's in-house blasting facility prepares the steel pole surface to help all finishes better adhere to the pole, and to provide a more uniform coating. No matter what your coating requirements may be, Sabre Tubular Structures can provide the finish that best meets your project needs.

Galvanized Steel Poles

Hot-dip galvanizing provides maintenance-free corrosion resistance for the designed life span of steel pole structures. Sabre Tubular Structures is able to offer zinc hot-dip galvanized coatings on steel poles up to 60 feet in length. For poles longer than 60 feet, Sabre has the in-house capabilities to provide a metalized zinc coating. All galvanizing adheres to stringent ASTM A123 specifications.

Once the galvanizing process is complete, the product is returned to Sabre's facility for a final quality control review prior to shipment to the customer. In rare cases, where either galvanizer location or delivery schedule precludes the shipment from returning to our facility, Sabre will perform an inspection of the structures at the galvanizer.



Weathering Steel Poles

Sabre Tubular Structures also offers weathering steel for tubular steel poles. When exposed to the environment, this specially-formulated steel material forms a Patina, a dense and tightly adherent oxide barrier, that seals out the atmosphere and reduces further corrosion. Over time this product naturally weathers to a deep dark brown color. Minor damage to this oxide coating heals itself, reducing the need for any type of maintenance.

Sabre Tubular Structures Finishes

Sabre Tubular Structures has a strategic alliance with Madison Chemical Industries, Inc. to provide both below and above ground corrosion protection.

Below Ground Protection

For below ground protection, Sabre offers Madison's Corrocote II Classic™, an advanced polyurethane coating, proven to provide the best barrier to corrosion. This enamel-like sheet of thermoset plastic bonds directly to the steel structure and provides a non-leaching, environmentally friendly barrier. With an unparalleled track record for long term resistance to all corrosive elements, Corrocote II Classic™ can be spray applied over both galvanized and weathering steel.



Above Ground Protection

When your requirements call for a color-coated finish, Sabre Tubular Structures offers Tufsheen™ coatings. Developed by Madison Chemical Industries, this unique polyurethane coating system protects steel structures from the ravages of corrosion, abrasion and chemical attack. Tufsheen™ is UV resistant and comes in a wide range of colors designed to blend with any

environment. Able to withstand extreme temperatures, this coating is environmentally friendly with no VOC's and is engineered for outstanding longevity. Madison has certified the coating technicians at Sabre Tubular Structures and provides Sabre with a two-year product replacement warranty.

For a natural look:



For safety:



Madison Chemical Industries, Inc.

Sabre Tubular Structures Finishes

Sabre Tubular Structures is committed to exceeding your expectations, by setting the standard in quality, customer service and performance in the tubular structures industry. We closely monitor our products to ensure your next project with Sabre Tubular Structures is a success. Call us today to find out how the Sabre Team can work for you.

*Sabre Tubular Structures . . .
Setting the Standard.*



A Division of Sabre Communications Corporation

Toll Free 866.254.3707

www.sabrecom.com

2300 West Risinger Road

Fort Worth, Texas 76134